



## NOTICE OF PESTICIDE APPLICATION

DATE OF APPLICATION: Wednesday 07/02/2025

LOCATION:

1. Various Grass Areas Along 4 of July Parade Route  
See Included Maps

PRODUCT & MANUFACTURER INFORMATION:

Product: Advance 375A Granular Ant Bait

Manufacturer: BASF Corporation

EPA Reg. No. 499-370

Active ingredients(S): Abamectin\* B1

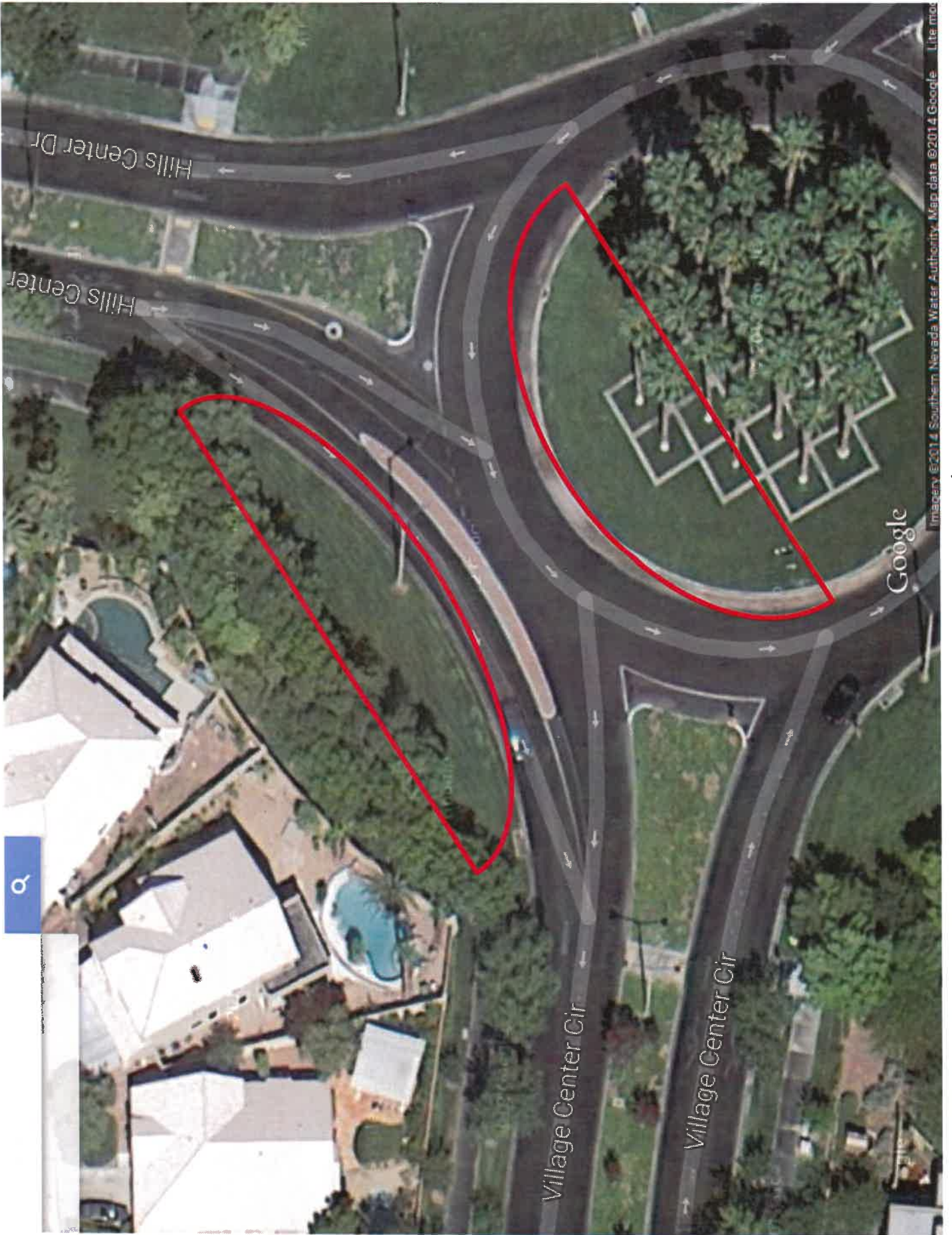
Precautionary statement: CAUTION! Hazard to humans and domestic animals. Harmful if swallowed or absorbed through the skin. Avoid breathing dust. Avoid contact with eyes, skin, or clothing. Wash thoroughly with soap and water after handling.

REASON FOR APPLICATION: General pest control - ants

\*Attached is the label and SDS sheet

EAST

NORTH



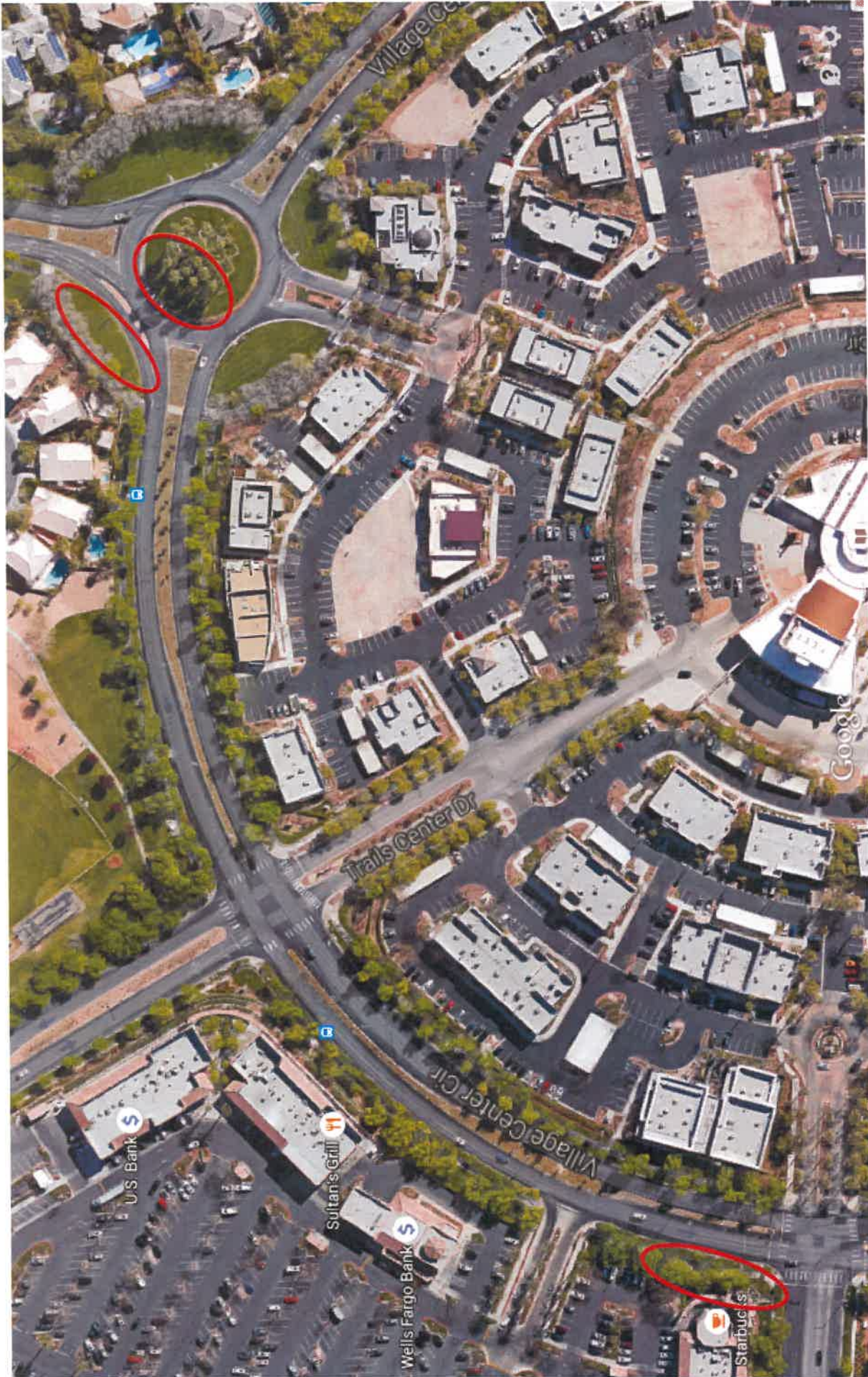
WEST

SOUTH



East

NORTH

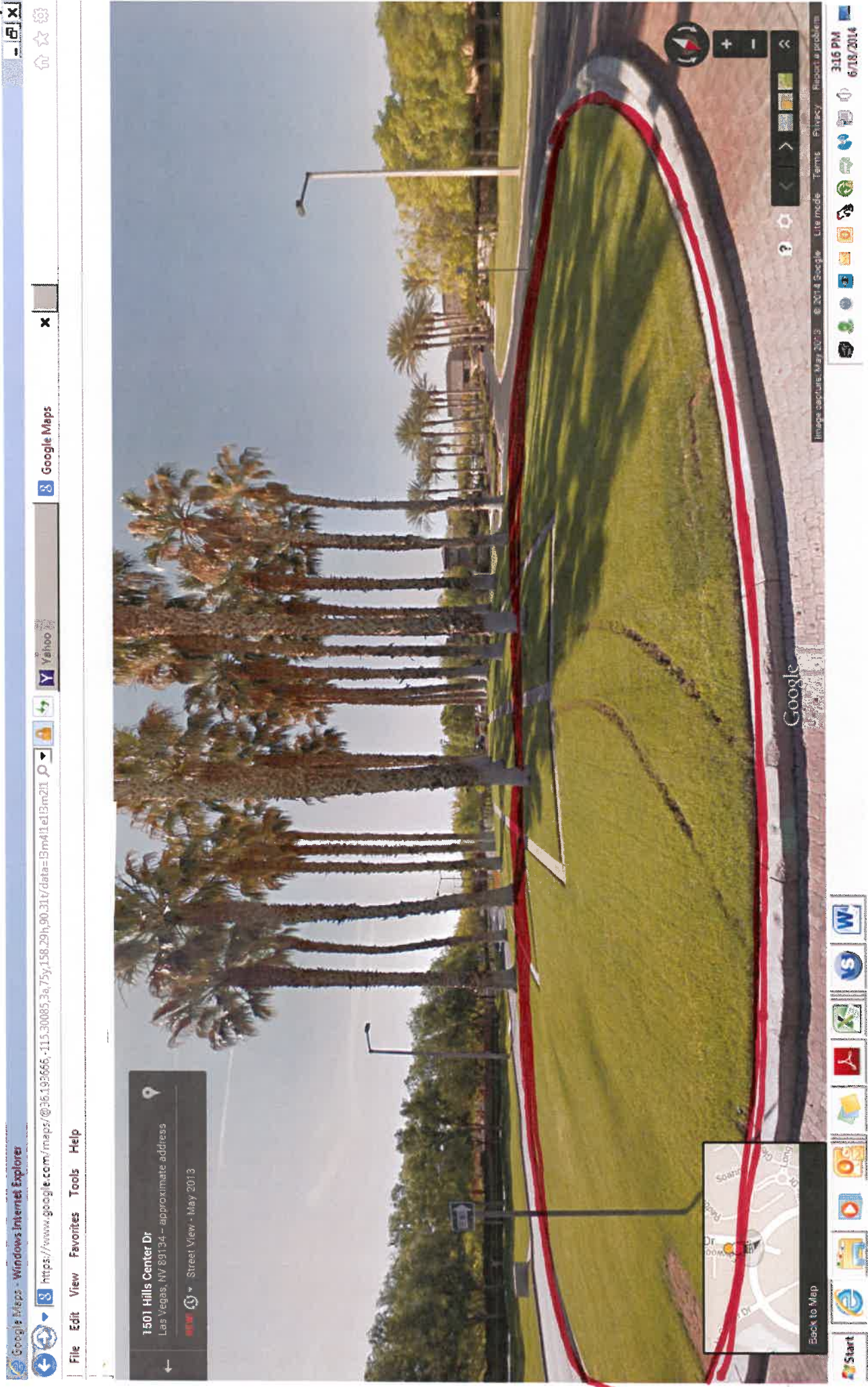


SOUTH

○ = VIP Seating Area's

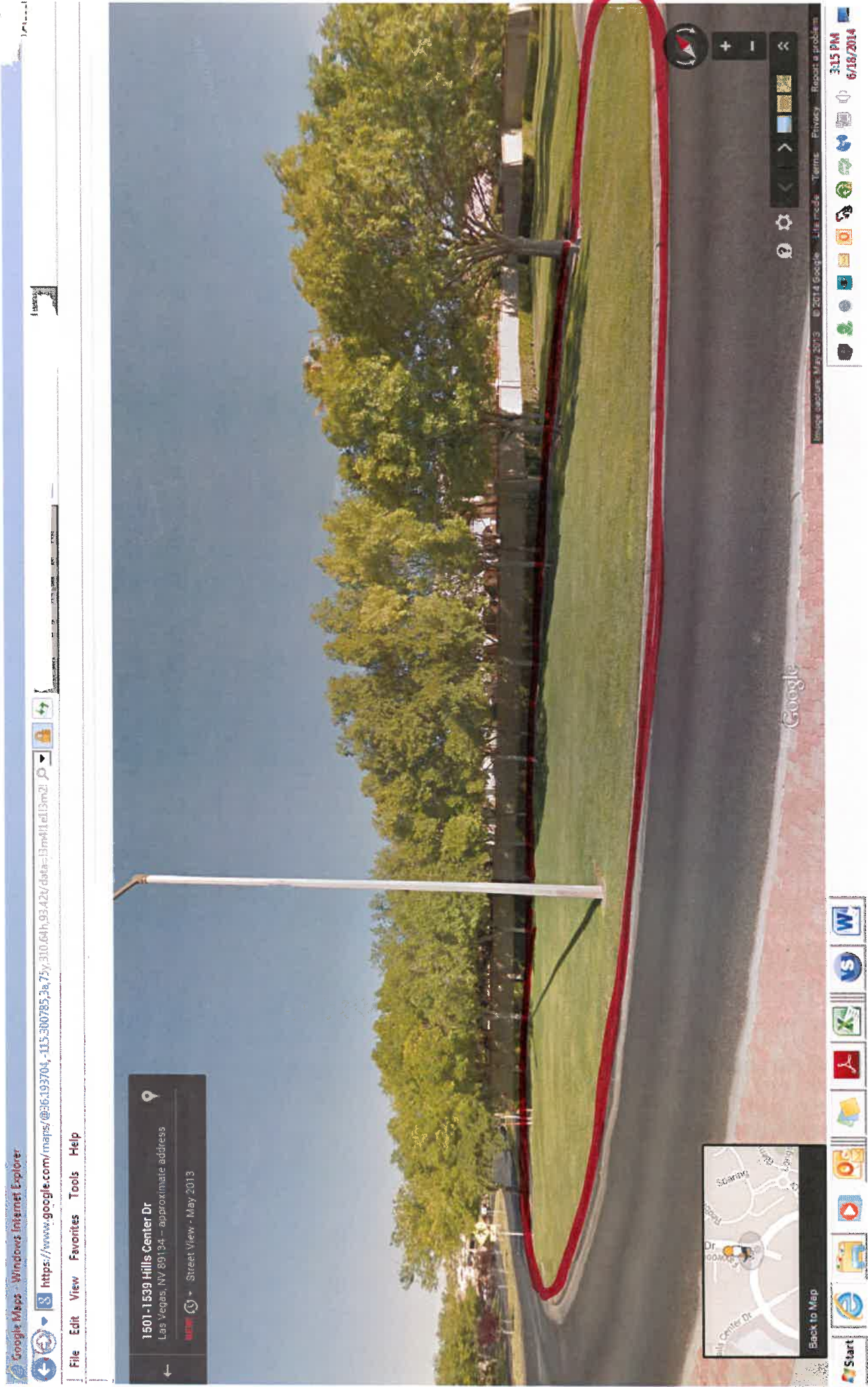
WEST





Half the circle on the NW side.



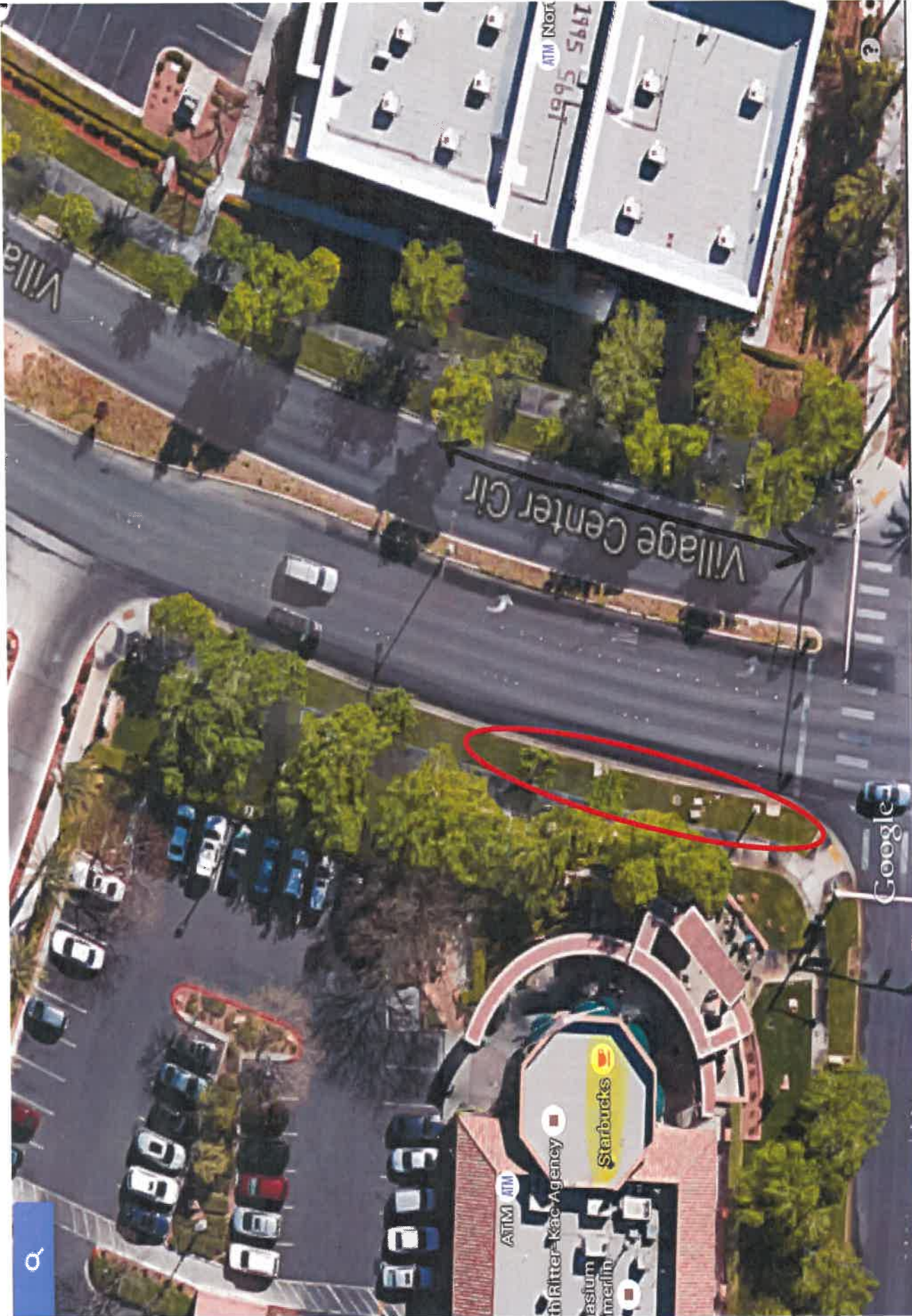


Entire Area.



EAST

NORTH



WEST

Trailwood Drive →  
Outside of Starbucks



West

Starbucks



Strip of grass near corner of Trailwood Dr.  
& Village Center Circle.



Facing West on (2100 – 2074) Hill Center Drive. Spray all grassy areas on both sides of the sidewalk in RED.



Spray all areas marked in RED on the corner of Hillpointe Rd & along Hills Center Dr.





Northwest Corner



2100 Hills Center Drive – North West Corner of Intersection.





## Northwest Corner



**2100 Hills Center Drive – North West Corner of Intersection.**



# SPECIMEN

# Advance® 375A

## Granular Ant Bait

**KILLS LISTED ANTS:** Including many common varieties of household ants such as Acrobat, Argentine, Bigheaded, Carpenter, Crazy, Field, Fire, Harvester, Little Black, Odorous House, Pavement, Pharaoh, and Thief Ants

**FOR USE IN AND AROUND:** Commercial and Other Structures, Food Storage Areas, Golf Courses, Homes, Hotels, Inedible Product Areas of Meat Packing Plants, Lawns, Motels, Non-food/feed Areas of Commercial Buildings, Non-occupied Patient Areas of Hospitals and Nursing Homes, Parks, Residential Areas, Schools, Supermarkets, Turf, and Warehouses

**ACTIVE INGREDIENT:**

Abamectin\* B<sub>1</sub> ..... 0.011%

**OTHER INGREDIENTS:** ..... 99.989%

**TOTAL:** ..... 100.000%

\*U.S. Pat. 4,310,519

EPA Reg. No. 499-370

EPA Est. No.

**KEEP OUT OF REACH OF CHILDREN**  
**CAUTION/PRECAUCION**

Si usted no entiende la etiqueta, busque a alguien para que se la explique a usted en detalle.  
(If you do not understand the label, find someone to explain it to you in detail.)

Refer to full label for **First Aid, Precautionary Statements, Directions For Use, Conditions of Sale and Warranty**, and state-specific use site restrictions.

**In case of an emergency endangering life or property involving this product, call day or night 1-800-832-HELP (4357).**

**NET WEIGHT:**

BASF Corporation  
26 Davis Drive  
Research Triangle Park, NC 27709

 **BASF**  
We create chemistry



FIRST AID	
<b>If swallowed</b>	<ul style="list-style-type: none"> <li>• Call a poison control center or doctor immediately for treatment advice.</li> <li>• Have person sip a glass of water if able to swallow.</li> <li>• <b>DO NOT</b> induce vomiting unless told to do so by a poison control center or doctor.</li> <li>• <b>DO NOT</b> give anything to an unconscious person.</li> </ul>
<b>If on skin or clothing</b>	<ul style="list-style-type: none"> <li>• Take off contaminated clothing.</li> <li>• Rinse skin immediately with plenty of water for 15 to 20 minutes.</li> <li>• Call a poison control center or doctor for treatment advice.</li> </ul>
<b>If in eyes</b>	<ul style="list-style-type: none"> <li>• Hold eyes open and rinse slowly and gently with water for 15 to 20 minutes.</li> <li>• Remove contact lenses, if present, after the first 5 minutes; then continue rinsing eyes.</li> <li>• Call a poison control center or doctor for treatment advice.</li> </ul>
HOTLINE NUMBER	
Have the product container or label with you when calling a poison control center or doctor, or going for treatment. You may also contact BASF Corporation for emergency medical treatment information: 1-800-832-HELP (4357).	

## Precautionary Statements

### Hazards to Humans and Domestic Animals

**CAUTION.** Harmful if swallowed or absorbed through the skin. Avoid breathing dust. Avoid contact with eyes, skin, or clothing. Wash thoroughly with soap and water after handling. **DO NOT** contaminate kitchen utensils with this product. Pets may be attracted to this product.

### Environmental Hazards

This pesticide is toxic to fish and wildlife. **DO NOT** apply directly to water, to areas where surface water is present, or to intertidal areas below the mean high water mark. **DO NOT** contaminate water when disposing of equipment washwaters.

## Directions For Use

It is a violation of federal law to use this product in a manner inconsistent with its labeling.

This is a ready-to-use product for use in controlling numerous ants both indoors and outdoors. This bait formulation combines a mixture of foods and the delayed action insecticide, abamectin. This insecticide acts to reduce the population of worker ants and can cause an immediate halt in egg production resulting in colony elimination.

In order to ensure access to bait, avoid the use of repellent insecticides or sprays on or near this product. Nonrepellent insecticides such as dinotefuran, chlorfenapyr, and fipronil may be used in conjunction with this product.

## STORAGE AND DISPOSAL

**DO NOT** contaminate water, food, or feed by storage or disposal.

### Pesticide Storage

Always store pesticides in the original container. Store in a cool, dry area away from heat or open flame, in an area that is inaccessible to children and animals.

### Pesticide Disposal

Waste resulting from use of this product may be disposed of on-site or at an approved waste disposal facility. If these wastes cannot be disposed of according to label instructions, contact your State Pesticide or Environmental Control Agency, or the Hazardous Waste representatives at the nearest EPA Regional Office for guidance.

### Container Handling

**Nonrefillable container. DO NOT reuse or refill this container. If empty:** Place in trash or offer for recycling if available. **If partly filled:** Call your local solid waste agency for disposal instructions.

## In Case of Emergency

In case of large-scale spill of this product, call:

- CHEMTREC 1-800-424-9300
- BASF Corporation 1-800-832-HELP (4357)

In case of medical emergency regarding this product, call:

- Your local doctor for immediate treatment
- Your local poison control center (hospital)
- BASF Corporation 1-800-832-HELP (4357)



---

## Outdoor Applications

---

Reapply as necessary but not sooner than 30 days after last application. **DO NOT** apply more than 4 pounds of product per acre per year. **DO NOT** apply more than 0.00044 pounds of abamectin per acre per year.

### Broadcast Application

Use this product at a rate of 1 pound per acre. This is equivalent to approximately 1.8 ounces per 5,000 square feet or 0.4 ounce per 1,000 square feet (1 tablespoon equals approximately 0.3 ounce of bait). Apply the product as uniformly as possible.

### Around Structures

Lightly sprinkle evenly at a rate of 0.3 ounce per 100 linear feet in a band approximately 1 to 2 feet wide around the foundation of the building. Treat visible trails with approximately 1 ounce of product.

### Individual Colony Treatment

Use 1.5 to 3 ounces of product per colony.

---

## Indoor Applications

---

**DO NOT** use in the food/feed areas of food/feed handling establishments, restaurants, or other areas where food is commercially prepared or processed. **DO NOT** use in serving areas while food is exposed or facility is in operation. Serving areas are areas where prepared foods are served such as dining rooms but excluding areas where foods may be prepared or held.

In the home, all food processing surfaces and utensils should be covered during treatment or thoroughly washed before use. Exposed food should be covered or removed. Non-food areas are areas such as garbage rooms, lavatories, floor drains (to sewers), entries and vestibules, offices, locker rooms, machine rooms, boiler rooms, garages, mop closets, and storage (after canning or bottling).

### Locate Ant Activity

Follow ants back to voids. Apply bait to crevices or voids where ants are active. Use up to 5 tablespoons per treatment site in a heavily traveled area. Use less in areas with less activity or if the treatment site will not hold that much. Use a large **Centrobulo**<sup>®</sup> puffer or other appropriate application device to place bait in crevices or voids. Enlarging the void's opening may be required. **DO NOT** contaminate kitchen utensils with this product.

### To Treat Plumbing Voids with Known Ant Activity

Obtain access to void and place up to 5 tablespoons inside the plumbing void. Place bait where it will remain dry. **DO NOT** contaminate kitchen utensils with this product.

### Utilities (such as above ground transformers, in-ground utility boxes, pedestal boxes, etc.)

If Fire ants are nesting or traveling inside utility boxes, place 5 to 7 tablespoons for lighter infestations or up to 3 ounces for heavy infestations on the ground or open floor area of the utility box. Placement should be made so bait stays dry and does not contact any equipment. **DO NOT** contaminate kitchen utensils with this product.



## Conditions of Sale and Warranty

The **Directions For Use** of this product reflect the opinion of experts based on field use and tests. The directions are believed to be reliable and must be followed carefully. However, it is impossible to eliminate all risks inherently associated with the use of this product. Ineffectiveness or other unintended consequences may result because of such factors as environmental conditions, presence of other materials, or use of the product in a manner inconsistent with its labeling, all of which are beyond the control of BASF CORPORATION ("BASF") or the Seller. To the extent consistent with applicable law, all such risks shall be assumed by the Buyer. BASF warrants that this product conforms to the chemical description on the label and is reasonably fit for the purposes referred to in the **Directions For Use**, subject to the inherent risks, referred to above. **TO THE EXTENT CONSISTENT WITH APPLICABLE LAW: (A) BASF MAKES NO OTHER WARRANTIES EXPRESS OR IMPLIED, INCLUDING WARRANTIES OF FITNESS FOR PARTICULAR PURPOSE OR MERCHANTABILITY, (B) BUYER'S EXCLUSIVE REMEDY AND BASF'S AND SELLER'S EXCLUSIVE LIABILITY, WHETHER IN CONTRACT, TORT, NEGLIGENCE, STRICT LIABILITY, OR OTHERWISE, SHALL BE LIMITED TO REPAYMENT OF THE PURCHASE PRICE OF THE PRODUCT, AND (C) BASF AND THE SELLER DISCLAIM ANY LIABILITY FOR CONSEQUENTIAL, INCIDENTAL, SPECIAL OR INDIRECT DAMAGES RESULTING FROM THE USE OR HANDLING OF THIS PRODUCT.** BASF and the Seller offer this product, and the Buyer and User accept it, subject to these **Conditions of Sale and Warranty** which may be varied only by agreement in writing signed by a duly authorized representative of BASF. PCS915

**Advance** is a registered trademark of BASF.

**Centrobult** is a registered trademark of the Centro Co.

© 2017 BASF Corporation  
All rights reserved.

000499-00370.20170118.**NVA 2017-04-420-0006**  
Based on: NVA 2016-04-420-0134  
Supersedes: NVA 2015-04-420-0069

BASF Corporation  
26 Davis Drive  
Research Triangle Park, NC 27709

  
We create chemistry



# Safety Data Sheet

## Advance 375A Granular Ant Bait

Revision date : 2019/04/30

Version: 9.0

Page: 1/11

(30628481/SDS CPA US/EN)

### 1. Identification

#### Product identifier used on the label

#### Advance 375A Granular Ant Bait

#### Recommended use of the chemical and restriction on use

Recommended use\*: biocide

Recommended use\*: insecticide

\* The "Recommended use" identified for this product is provided solely to comply with a Federal requirement and is not part of the seller's published specification. The terms of this Safety Data Sheet (SDS) do not create or infer any warranty, express or implied, including by incorporation into or reference in the seller's sales agreement.

#### Details of the supplier of the safety data sheet

Company:

BASF SE  
67056 Ludwigshafen  
GERMANY

Contact address:

BASF CORPORATION  
100 Park Avenue  
Florham Park, NJ 07932  
USA  
Telephone: +1 973 245-6000

#### Emergency telephone number

CHEMTREC: 1-800-424-9300

BASF HOTLINE: 1-800-832-HELP (4357)

#### Other means of identification

Substance number: 396152  
EPA Registration number: 499-370  
Synonyms: Abamectin B1

### 2. Hazards Identification

According to Regulation 2012 OSHA Hazard Communication Standard; 29 CFR Part 1910.1200

#### Label elements

The product does not require a hazard warning label in accordance with GHS criteria.

#### Hazards not otherwise classified



# Safety Data Sheet

## Advance 375A Granular Ant Bait

Revision date : 2019/04/30  
Version: 9.0

Page: 2/11  
(30628481/SDS\_CPA\_US/EN)

### Labeling of special preparations (GHS):

This product is not combustible in the form in which it is shipped by the manufacturer, but may form a combustible dust through downstream activities (e.g. grinding, pulverizing) that reduce its particle size.

## 3. Composition / Information on Ingredients

According to Regulation 2012 OSHA Hazard Communication Standard: 29 CFR Part 1910.1200

<u>CAS Number</u>	<u>Weight %</u>	<u>Chemical name</u>
71751-41-2	0.011 %	Abamectin
8001-22-7	< 15.0%	Soybean oil
57-50-1	< 10.0%	Sucrose

## 4. First-Aid Measures

### Description of first aid measures

#### General advice:

First aid providers should wear personal protective equipment to prevent exposure. Remove contaminated clothing. Move person to fresh air. If person is not breathing, call 911 or ambulance, then give artificial respiration, preferably mouth-to-mouth if possible. In case of intoxication, call a poison control center or physician for treatment advice, taking the packaging or the label of the product.

#### If inhaled:

Remove the affected individual into fresh air and keep the person calm.

#### If on skin:

Rinse skin immediately with plenty of water for 15 - 20 minutes.

#### If in eyes:

Hold eyes open and rinse slowly and gently with water for 15 to 20 minutes. Remove contact lenses, if present, after first 5 minutes, then continue rinsing.

#### If swallowed:

Never induce vomiting or give anything by mouth if the victim is unconscious or having convulsions. Do not induce vomiting. Have person sip a glass of water if able to swallow.

### Most important symptoms and effects, both acute and delayed

Symptoms: (Further) symptoms and / or effects are not known so far

### Indication of any immediate medical attention and special treatment needed

#### Note to physician

Treatment: Symptomatic treatment (decontamination, vital functions).

## 5. Fire-Fighting Measures

### Extinguishing media



# Safety Data Sheet

## Advance 375A Granular Ant Bait

Revision date : 2019/04/30  
Version: 9.0

Page: 3/11  
(30628481/SDS CPA US/EN)

Suitable extinguishing media:  
foam, dry powder, carbon dioxide, water spray

### Special hazards arising from the substance or mixture

Hazards during fire-fighting:  
carbon monoxide, carbon dioxide,  
The substances/groups of substances mentioned can be released in case of fire.

### Advice for fire-fighters

Protective equipment for fire-fighting:  
Firefighters should be equipped with self-contained breathing apparatus and turn-out gear.

### Further information:

Evacuate area of all unnecessary personnel. Contain contaminated water/firefighting water. Do not allow to enter drains or waterways. Dusty conditions may ignite explosively in the presence of an ignition source causing flash fire.

---

## 6. Accidental release measures

### Further accidental release measures:

Avoid dispersal of dust in the air (i.e., clearing dust surfaces with compressed air). Avoid the formation and build-up of dust - danger of dust explosion. Dust in sufficient concentration can result in an explosive mixture in air. Handle to minimize dusting and eliminate open flame and other sources of ignition.

### Personal precautions, protective equipment and emergency procedures

Take appropriate protective measures. Clear area. Shut off source of leak only under safe conditions. Extinguish sources of ignition nearby and downwind. Ensure adequate ventilation. Wear suitable personal protective clothing and equipment.

### Environmental precautions

Do not discharge into the subsoil/soil. Do not discharge into drains/surface waters/groundwater. Contain contaminated water/firefighting water. A spill of or in excess of the reportable quantity requires notification to state, local and national emergency authorities. This product is not regulated by CERCLA ('Superfund').

### Methods and material for containment and cleaning up

Dike spillage. Pick up with suitable absorbent material. Spilled substance/product should be recovered and applied according to label rates whenever possible. If application of spilled substance/product is not possible, then spills should be contained, solidified, and placed in suitable containers for disposal. After decontamination, spill area can be washed with water. Collect wash water for approved disposal.

---

## 7. Handling and Storage

### Precautions for safe handling

RECOMMENDATIONS ARE FOR MANUFACTURING, COMMERCIAL BLENDING, AND PACKAGING WORKERS. PESTICIDE APPLICATORS & WORKERS must refer to the Product Label and Directions for Use attached to the product. Provide good ventilation of working area (local exhaust ventilation if necessary). Keep away from sources of ignition - No smoking. Keep container tightly sealed. Protect against heat. Handle and open container with care. Do not open until ready to use. Once container is opened, content should be used as soon as possible. Provide means for controlling leaks and spills. Follow label warnings even after container is emptied. The substance/

# Safety Data Sheet

## Advance 375A Granular Ant Bait

Revision date : 2019/04/30  
Version: 9.0

Page: 4/11  
(30628481/SDS CPA US/EN)

product may be handled only by appropriately trained personnel. Avoid all direct contact with the substance/product. Avoid contact with the skin, eyes and clothing. Avoid inhalation of dusts/mists/vapours. Wear suitable personal protective clothing and equipment.

### Protection against fire and explosion:

The relevant fire protection measures should be noted. Fire extinguishers should be kept handy. Avoid all sources of ignition: heat, sparks, open flame. Avoid extreme heat. Ground all transfer equipment properly to prevent electrostatic discharge. Electrostatic discharge may cause ignition. Avoid dust formation. Dust in sufficient concentration can result in an explosive mixture in air. Handle to minimize dusting and eliminate open flame and other sources of ignition. Routine housekeeping should be instituted to ensure that dusts do not accumulate on surfaces. Dry powders can build static electricity charges when subjected to the friction of transfer and mixing operations. Provide adequate precautions, such as electrical grounding and bonding, or inert atmospheres. Refer to NFPA 654, Standard for the Prevention of Fire and Dust Explosions from the Manufacturing, Processing, and Handling of Combustible Particulate Solids (2013 Edition) for safe handling.

### Conditions for safe storage, including any incompatibilities

Segregate from incompatible substances. Segregate from foods and animal feeds. Segregate from textiles and similar materials.

Further information on storage conditions: Keep only in the original container in a cool, dry, well-ventilated place away from ignition sources, heat or flame. Protect containers from physical damage. Protect against contamination. The authority permits and storage regulations must be observed.

### Storage stability:

May be kept indefinitely if stored properly.

If an expiry date is mentioned on the packaging/label this takes priority over the statements on storage duration in this safety data sheet.

## 8. Exposure Controls/Personal Protection

Users of a pesticidal product should refer to the product label for personal protective equipment requirements.

### Components with occupational exposure limits

Sucrose	OSHA PEL	PEL 15 mg/m3 Total dust ; PEL 5 mg/m3 Respirable fraction ; TWA value 15 mg/m3 Total dust ; TWA value 5 mg/m3 Respirable fraction ;
	ACGIH TLV	TWA value 10 mg/m3 ;
Soybean oil	OSHA PEL	PEL 5 mg/m3 Respirable fraction ; PEL 15 mg/m3 Total dust ; TWA value 15 mg/m3 Total dust ; TWA value 5 mg/m3 Respirable fraction ;

### Advice on system design:

Whenever possible, engineering controls should be used to minimize the need for personal protective equipment. It is recommended that all dust control equipment such as local exhaust ventilation and material transport systems involved in handling of this product contain explosion relief vents or an explosion suppression system or an oxygen deficient environment. Ensure that dust-handling systems (such as exhaust ducts, dust collectors, vessels, and processing equipment) are designed in a manner to prevent the escape of dust into the work area (i.e., there is no leakage from the equipment). Use only appropriately classified electrical equipment and powered industrial trucks.



# Safety Data Sheet

## Advance 375A Granular Ant Bait

Revision date : 2019/04/30  
Version: 9.0

Page: 5/11  
(30628481/SDS CPA US/EN)

### Personal protective equipment

#### **RECOMMENDATIONS FOR MANUFACTURING, COMMERCIAL BLENDING, AND PACKAGING WORKERS:**

##### **Respiratory protection:**

Wear respiratory protection if ventilation is inadequate. Wear a NIOSH-certified (or equivalent) organic vapour/particulate respirator. For situations where the airborne concentrations may exceed the level for which an air purifying respirator is effective, or where the levels are unknown or Immediately Dangerous to Life or Health (IDLH), use NIOSH-certified full facepiece pressure demand self-contained breathing apparatus (SCBA) or a full facepiece pressure demand supplied-air respirator (SAR) with escape provisions.

##### **Hand protection:**

Chemical resistant protective gloves, Protective glove selection must be based on the user's assessment of the workplace hazards.

##### **Eye protection:**

Safety glasses with side-shields. Tightly fitting safety goggles (chemical goggles). Wear face shield if splashing hazard exists.

##### **Body protection:**

Body protection must be chosen depending on activity and possible exposure, e.g. head protection, apron, protective boots, chemical-protection suit.

##### **General safety and hygiene measures:**

RECOMMENDATIONS FOR MANUFACTURING, COMMERCIAL BLENDING, AND PACKAGING WORKERS Wear long sleeved work shirt and long work pants in addition to other stated personal protective equipment. Work place should be equipped with a shower and an eye wash. Handle in accordance with good industrial hygiene and safety practice. Store work clothing separately. Keep away from food, drink and animal feeding stuffs.

---

## **9. Physical and Chemical Properties**

Form:	granules
Odour:	product specific
Odour threshold:	Not determined due to potential health hazard by inhalation.
Colour:	yellowish
pH value:	insoluble, not applicable, The statements are based on the properties of the individual components.
Melting point:	not applicable
Flash point:	not applicable
Flammability:	Product is combustible.
Lower explosion limit:	As a result of our experience with this product and our knowledge of its composition we do not expect any hazard as long as the product is used appropriately and in accordance with the intended use.
Upper explosion limit:	As a result of our experience with this product and our knowledge of its composition we do not expect any hazard as long as the product is used appropriately and in accordance with the intended use.
Vapour pressure:	negligible

# Safety Data Sheet

## Advance 375A Granular Ant Bait

Revision date : 2019/04/30  
Version: 9.0

Page: 6/11  
(30628481/SDS CPA US/EN)

Bulk density:	approx. 288 - 352 kg/m <sup>3</sup>
Vapour density:	not applicable
Partitioning coefficient n-octanol/water (log Pow):	not applicable
Self-ignition temperature:	Based on its structural properties the product is not classified as self-igniting.
Thermal decomposition:	carbon monoxide, carbon dioxide Stable at ambient temperature. If product is heated above decomposition temperature toxic vapours may be released. To avoid thermal decomposition, do not overheat.
Viscosity, dynamic:	not applicable
Solubility in water:	insoluble
Evaporation rate:	not applicable
Other Information:	If necessary, information on other physical and chemical parameters is indicated in this section.

## 10. Stability and Reactivity

### Reactivity

No hazardous reactions if stored and handled as prescribed/indicated.

Corrosion to metals:

Corrosive effects to metal are not anticipated.

Oxidizing properties:

Based on its structural properties the product is not classified as oxidizing.

### Chemical stability

The product is stable if stored and handled as prescribed/indicated.

### Possibility of hazardous reactions

The product is chemically stable.

### Conditions to avoid

Avoid all sources of ignition: heat, sparks, open flame. Avoid prolonged storage. Avoid electro-static discharge. Avoid contamination. Avoid prolonged exposure to extreme heat. Avoid extreme temperatures. This product may form an explosive mixture if: 1. the dust is suspended in the atmosphere as a dust cloud AND 2. the concentration of the dust is above the lower explosion limit (LEL) AND 3. the limiting oxygen concentration (LOC) is exceeded.

### Incompatible materials

caustics

### Hazardous decomposition products

Decomposition products:

No hazardous decomposition products if stored and handled as prescribed/indicated., Prolonged thermal loading can result in products of degradation being given off.

Thermal decomposition:

Possible thermal decomposition products:

carbon monoxide, carbon dioxide

Stable at ambient temperature. If product is heated above decomposition temperature toxic vapours may be released. To avoid thermal decomposition, do not overheat.



# Safety Data Sheet

## Advance 375A Granular Ant Bait

Revision date : 2019/04/30  
Version: 9.0

Page: 7/11  
(30628481/SDS CPA US/EN)

### 11. Toxicological information

#### Primary routes of exposure

Routes of entry for solids and liquids are ingestion and inhalation, but may include eye or skin contact. Routes of entry for gases include inhalation and eye contact. Skin contact may be a route of entry for liquefied gases.

#### Acute Toxicity/Effects

##### Acute toxicity

Assessment of acute toxicity: Relatively nontoxic after short-term skin contact. Relatively nontoxic after single ingestion.

##### Oral

Type of value: LD50

Species: rat

Value: > 5,000 mg/kg

##### Inhalation

*Information on: Abamectin*

*Type of value: LC50*

*Species: rat*

*Value: > 0.034 mg/l (OECD Guideline 403)*

*Exposure time: 4 h*

-----

##### Dermal

Type of value: LD50

Species: rabbit

Value: 2,000 mg/kg

##### Assessment other acute effects

Assessment of STOT single:

The available information is not sufficient for the evaluation of specific target organ toxicity.

##### Irritation / corrosion

Assessment of irritating effects: May cause moderate but temporary irritation to the eyes. May cause slight irritation to the skin.

##### Skin

*Information on: Abamectin*

*Species: rabbit*

*Result: non-irritant*

-----

##### Eye

*Information on: Abamectin*

*Species: rabbit*

*Result: non-irritant*

*Method: OECD Guideline 405*

-----

##### Sensitization

# Safety Data Sheet

## Advance 375A Granular Ant Bait

Revision date : 2019/04/30  
Version: 9.0

Page: 8/11  
(30628481/SDS CPA US/EN)

Assessment of sensitization: Skin sensitizing effects were not observed in animal studies.

Species: guinea pig  
Result: Non-sensitizing.

### Chronic Toxicity/Effects

#### Repeated dose toxicity

Assessment of repeated dose toxicity: The product has not been tested. The statement has been derived from the properties of the individual components. No substance-specific organotoxicity was observed after repeated administration to animals.

#### *Information on: Abamectin*

*Assessment of repeated dose toxicity:* Repeated inhalation exposure to small quantities may affect certain organs.

*Repeated oral exposure to small quantities may affect certain organs.*

#### Genetic toxicity

Assessment of mutagenicity: The product has not been tested. The statement has been derived from the properties of the individual components. Mutagenicity tests revealed no genotoxic potential.

#### Carcinogenicity

Assessment of carcinogenicity: The product has not been tested. The statement has been derived from the properties of the individual components. The results of various animal studies gave no indication of a carcinogenic effect.

#### Reproductive toxicity

Assessment of reproduction toxicity: The product has not been tested. The statement has been derived from the properties of the individual components. The results of animal studies gave no indication of a fertility impairing effect.

#### Teratogenicity

Assessment of teratogenicity: The product has not been tested. The statement has been derived from the properties of the individual components.

#### *Information on: Abamectin*

*Assessment of teratogenicity:* Indications of possible developmental toxicity/teratogenicity were seen in animal studies.

*Causes developmental effects in animals at high, maternally toxic doses.*

#### Other Information

Misuse can be harmful to health.

### Symptoms of Exposure

(Further) symptoms and / or effects are not known so far

---

## 12. Ecological Information

### Toxicity

Aquatic toxicity

Assessment of aquatic toxicity:



# Safety Data Sheet

## Advance 375A Granular Ant Bait

Revision date : 2019/04/30  
Version: 9.0

Page: 9/11  
(30628481/SDS CPA US/EN)

Very toxic (acute effect) to fish. Very toxic (acute effect) to aquatic invertebrates. Acutely toxic for aquatic plants.

### Toxicity to fish

Information on: *Abamectin*  
LC50 (96 h) 0.0036 mg/l, *Oncorhynchus mykiss*

### Aquatic invertebrates

Information on: *Abamectin*  
EC50 (48 h) 0.00034 mg/l, *Daphnia magna*

### Aquatic plants

Information on: *Abamectin*  
EC50 (72 h) > 0.00159 mg/l, *Pseudokirchneriella subcapitata*

## Mobility in soil

### Assessment transport between environmental compartments

The product has not been tested. The statement has been derived from the properties of the individual components.

Information on: *Abamectin*

Following exposure to soil, adsorption to solid soil particles is probable, therefore contamination of groundwater is not expected.

## Additional information

Other ecotoxicological advice:

Do not discharge product into the environment without control.

## 13. Disposal considerations

### **Waste disposal of substance:**

Pesticide wastes are regulated. If pesticide wastes cannot be disposed of according to label instructions, contact the State Pesticide or Environmental Control Agency or the Hazardous Waste representative at the nearest EPA Regional Office for guidance.

### **Container disposal:**

Rinse thoroughly at least three times (triple rinse) in accordance with EPA recommendations. Consult state or local disposal authorities for approved alternative procedures such as container recycling. Recommend crushing, puncturing or other means to prevent unauthorized use of used containers.

## 14. Transport Information

Land transport  
USDOT

Not classified as a dangerous good under transport regulations

# Safety Data Sheet

## Advance 375A Granular Ant Bait

Revision date : 2019/04/30  
Version: 9.0

Page: 10/11  
(30628481/SDS\_CPA\_US/EN)

### Sea transport

#### IMDG

Hazard class: 9  
Packing group: III  
ID number: UN 3077  
Hazard label: 9, EHSM  
Marine pollutant: YES  
Proper shipping name: ENVIRONMENTALLY HAZARDOUS SUBSTANCE, SOLID, N.O.S.  
(contains ABAMECTIN)

### Air transport

#### IATA/ICAO

Hazard class: 9  
Packing group: III  
ID number: UN 3077  
Hazard label: 9, EHSM  
Proper shipping name: ENVIRONMENTALLY HAZARDOUS SUBSTANCE, SOLID, N.O.S.  
(contains ABAMECTIN)

### Further information

The following provisions may apply for product in packages containing a net quantity of 5 kg or less  
ADR, RID, ADN: Special Provision 375;  
IMDG: 2.10.2.7;  
IATA: A197;  
TDG: Special Provision 99(2);  
49CFR: §171.4 (c) (2).

## 15. Regulatory Information

### Federal Regulations

#### Registration status:

Crop Protection TSCA, US released / exempt

Chemical TSCA, US blocked / not listed

**EPCRA 311/312 (Hazard categories):** Refer to SDS section 2 for GHS hazard classes applicable for this product.

### State regulations

#### State RTK

	<u>CAS Number</u>	<u>Chemical name</u>
PA	57-50-1	Sucrose
	8001-22-7	Soybean oil
MA	57-50-1	Sucrose
	8001-22-7	Soybean oil

**Safe Drinking Water & Toxic Enforcement Act, CA Prop. 65:**

**BASF Risk Assessment, CA Prop. 65:**



# Safety Data Sheet

## Advance 375A Granular Ant Bait

Revision date : 2019/04/30  
Version: 9.0

Page: 11/11  
(30628481/SDS CPA US/EN)

Based on an evaluation of the product's composition and the use(s), this product does not require a California Proposition 65 Warning.

### Labeling requirements under FIFRA

This chemical is a pesticide product registered by the Environmental Protection Agency and is subject to certain labeling requirements under federal pesticide law. These requirements differ from the classification criteria and hazard information required for safety data sheets, and workplace labels of non-pesticide chemicals. Following is the hazard information as required on the pesticide label.

#### CAUTION:

KEEP OUT OF REACH OF CHILDREN.

KEEP OUT OF REACH OF DOMESTIC ANIMALS.

HARMFUL IF SWALLOWED.

HARMFUL IF ABSORBED THROUGH SKIN.

Avoid inhalation of dusts.

Avoid contact with the skin, eyes and clothing.

Wash thoroughly after handling.

---

## 16. Other Information

### SDS Prepared by:

BASF NA Product Regulations

SDS Prepared on: 2019/04/30

We support worldwide Responsible Care® initiatives. We value the health and safety of our employees, customers, suppliers and neighbors, and the protection of the environment. Our commitment to Responsible Care is integral to conducting our business and operating our facilities in a safe and environmentally responsible fashion, supporting our customers and suppliers in ensuring the safe and environmentally sound handling of our products, and minimizing the impact of our operations on society and the environment during production, storage, transport, use and disposal of our products.

---

END OF DATA SHEET