



# NOTICE OF INSECTICIDE CONTROL APPLICATION

**Date of Application:** November 30, 2023

**Location:** Pueblo Park turf area next to the restrooms.

**Reason for Application:** For control of damaging insects (grubs) below the soil surface.

**Product Manufacturer Name:** Bayer Dylox 6.2 Granular

-EPA registration no. 5481-641-432

-Active ingredients: Trichlorfon, Dimethyl phosphonate

-Precautionary statement: Harmful if swallowed. Causes moderate eye irritation.

Do not take internally. Do not breathe dust. Avoid contact with eyes, skin, or clothing.

**\*See attached label and SDS sheet**

**\*Dates are subject to change due to weather**



# Dylox<sup>®</sup>

## 6.2

**GRANULAR INSECTICIDE**

For Control of White Grubs, Mole Crickets, Sod Webworms,  
Cutworms, and Other listed Pests of Turfgrass  
Controls damaging insects below the soil surface

Provides control of Japanese beetle grubs

**ACTIVE INGREDIENT:**

Trichlorfon, Dimethyl (2,2,2-trichloro-  
1-hydroxy-ethyl)phosphonate ..... 6.2%

**OTHER INGREDIENTS:** ..... 93.8%

**TOTAL:** ..... 100.0%

**STORE IN A DRY PLACE**

Treats 10,000 sq ft for White Grubs and Mole Crickets

Treats 15,000 sq ft for Sod Webworms

EPA Reg. No. 5481-641-432

EPA Est. No. 070989-MO-001

**STOP - READ THE LABEL BEFORE USE.**

**KEEP OUT OF REACH OF CHILDREN.**

**CAUTION**

**PARA EL USUARIO:** Si usted no lee o entiende inglés, no use este  
producto hasta que le hayan explicado completamente las instruc-  
ciones que figuran en la etiqueta.

**(TO THE USER:** If you cannot read or understand English, do not use  
this product until the label has been fully explained to you.)

For MEDICAL And TRANSPORTATION Emergencies ONLY Call 24  
Hours A Day 1-800-334-7577

For PRODUCT USE Information Call 1-800-331-2867

**FIRST AID**

Contains an organophosphate that inhibits cholinesterase.

**If swallowed:**

- Call a poison control center or doctor immediately for treatment advice.
- Have person sip a glass of water if able to swallow.
- Do not induce vomiting unless told to do so by a poison control center or doctor.
- Do not give anything to an unconscious person.

**If in eyes:**

- Hold eye open and rinse slowly and gently with water for 15 to 20 minutes. Remove contact lenses, if present, after the first 5 minutes, then continue rinsing.
- Call a poison control center or doctor for treatment advice.

Have the product container or label with you when calling a poison control center or doctor or going for treatment. The Bayer Environmental Science Emergency Response Telephone No. is 1-800-334-7577.

**Note To Physician:** Prolonged exposure will cause cholinesterase depression. Atropine Sulfate is antidotal. 2-PAM is also antidotal and may be administered in conjunction with atropine.

**Net Contents**  
**30 Pounds**

**SKU #86714558**

190612AV1

GROUP 1B INSECTICIDE

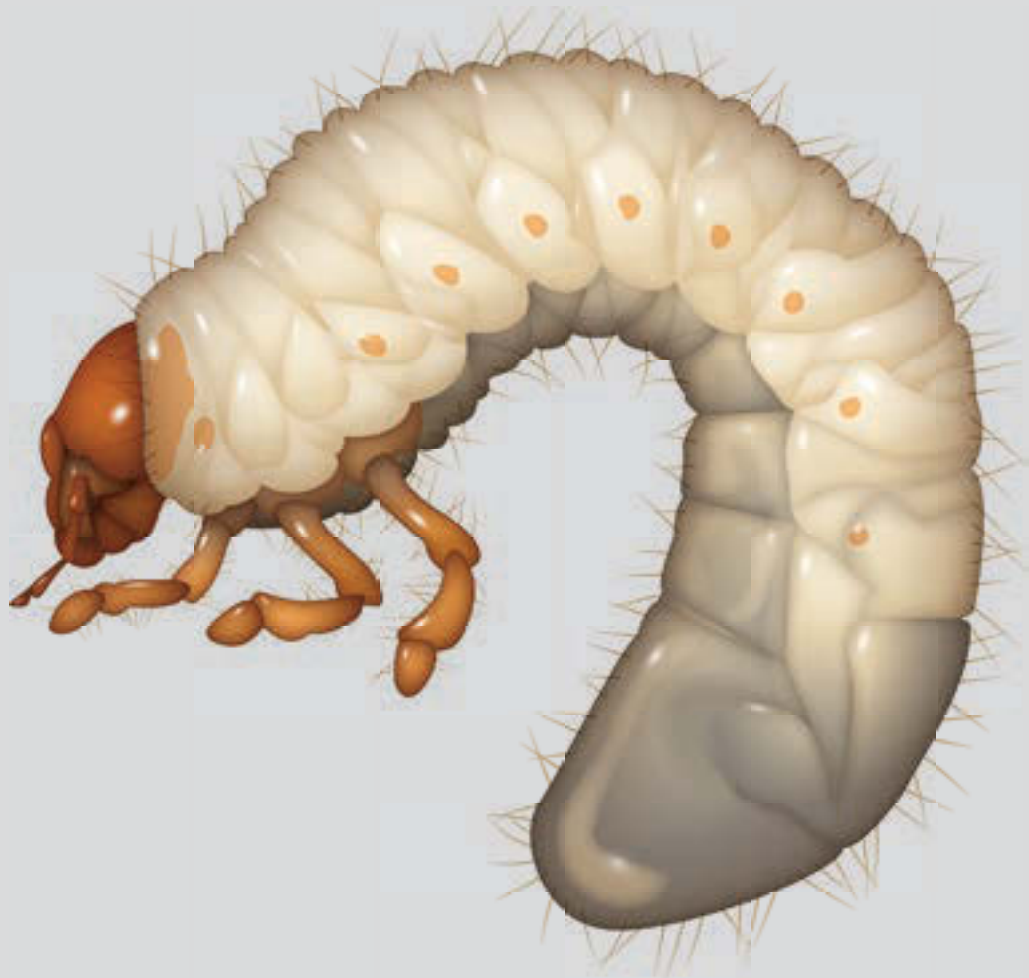
ACE

Copy Area

Bayer

Produced for:  
Bayer Environmental Science  
A Division of Bayer CropScience LP  
5000 CentreGreen Way, Suite 400  
Cary, NC 27513

## White Grubs





**Dylox<sup>®</sup>**  
**6.2**

**GRANULAR INSECTICIDE**

## PRECAUTIONARY STATEMENTS

### HAZARDS TO HUMANS AND DOMESTIC ANIMALS

#### CAUTION

Harmful if swallowed. Causes moderate eye irritation. Do not take internally. Do not breathe dust. Avoid contact with eyes, skin, or clothing. Prolonged or frequently repeated skin contact may cause allergic reactions in some people.

#### PERSONAL PROTECTIVE EQUIPMENT (PPE)

**Mixers, Loaders, Applicators and other handlers must wear:**

- Long-sleeved shirt and long pants
- Shoes plus socks

Follow manufacturer's instructions for cleaning/ maintaining PPE. If no such instructions for washables exist, use detergent and hot water. Keep and wash PPE separately from other laundry.

### User Safety Recommendations

#### Users should:

- Wash hands before eating, drinking, chewing gum, using tobacco, or using the toilet.
- Remove clothing/PPE immediately if pesticide gets inside. Then wash thoroughly and put on clean clothing.
- Remove PPE immediately after handling this product. Wash outside of gloves before removing. As soon as possible, wash thoroughly and change into clean clothing.

### ENVIRONMENTAL HAZARDS

This product is toxic to fish, birds, and wildlife. Do not apply directly to water. Do not contaminate water by cleaning of equipment or disposal of wastes. Do not apply when turf grass areas are water-logged or the soil is saturated with water (i.e. will not allow penetration into the root zone of the plant). Avoid run-off or puddling of irrigation water following application.

To protect the environment, do not allow pesticide to enter or run off into storm drains, drainage ditches, gutters, or surface waters. Applying this product in calm weather when rain is not predicted for the next 24 hours will help to ensure that wind or rain does not blow or wash pesticide off the treatment area. Sweeping any product that lands on a driveway, sidewalk, or street, back onto the treated area of the lawn or garden will help to prevent run off to water bodies or drainage systems.

Use only as directed on this label. Do not use on crops used for food or forage.

### DIRECTIONS FOR USE

**It is a violation of Federal law to use this product in a manner inconsistent with its labeling.**  
**IMPORTANT:** Read these entire Directions for Use before using DYLOX 6.2 Granular Insecticide. **Do not use on turf being grown for sale or other commercial use as sod, or for commercial seed production or for research purposes except for research involving use of this product that is consistent with this label.**

### ENTRY RESTRICTIONS

Do not enter or allow others to enter the treated area (except those persons involved in the incorporation) until the incorporation is complete. Incorporation is to be accomplished by watering-in. Do not enter or allow others to enter the treated area until the surface is dry after the watering-in. For home lawns, notify the property owner that he or she must water-in the product promptly or within the same day.

### RESTRICTIONS

- Do not apply this product in a way that will contact workers or other persons, either directly or through drift.
- Only protected handlers may be in the area during application.
- Aerial application is prohibited.
- Use this product only on the turf sites permitted by this label.
- Do not apply this product using hand-held or chest-mounted spreaders.
- The applicator must water-in the product after application, or notify the property owner that he or she must water-in after application on the same day.
- Limit the number of applications to turf to 3 per calendar year with minimum retreatment intervals of 7 days.
- Limit the total of all applications to 24.5 lbs of active ingredient (39.5 lbs of product) per acre per year for controlling mole crickets and grubs and to 16.2 lbs of active ingredient (261 lbs of product) per acre per year for controlling surface feeding insects.
- Apply this product directly to the lawn or garden area. Water treated area as directed on this label.
- Do not water to the point of run-off. Do not make applications during rain.
- Application is prohibited directly into sewers or drains, or to any area like a gutter where drainage to sewers, storm drains, water bodies, or aquatic habitat can occur. Do not allow the product to enter any drain during or after application.

## Additional Restrictions For Turf on Golf Courses

- Do not apply within 25 feet of lakes, reservoirs, rivers, permanent streams, marshes, natural ponds, or estuaries.
- Broadcast use is limited to tees and greens. Use on fairways is limited to spot treatments.
- Post-application watering-in is mandatory.

## PRODUCT SPECIFICATIONS

<b>DYLOX® 6.2 GRANULAR INSECTICIDE</b>	<ul style="list-style-type: none"><li>• Granular Insecticide containing 6.2% trichlorfon</li></ul>
<b>CONTROLS</b>	<ul style="list-style-type: none"><li>• White Grub Larvae (such as larvae of Asiatic garden beetle, black turfgrass ateniens, European chafer, green June beetle, Japanese beetle, <i>Aphodius</i> spp., May or June beetles (<i>Phyllophaga</i> spp.), northern and southern masked chafers (<i>Cyclocephala</i> spp.), oriental beetle and sugarcane grubs (<i>Tomarus</i> spp.))</li><li>• Mole crickets</li><li>• Annual bluegrass weevil</li><li>• Billbug larvae</li><li>• Sod webworms and cranberry girdler</li><li>• Cutworms and armyworms</li><li>• Chinch bugs</li></ul>
<b>WHERE TO APPLY</b>	<ul style="list-style-type: none"><li>• All types of turf where pests have been seen or found excluding turf where application is not allowed. See IMPORTANT: above.</li></ul>
<b>COVERAGE</b>	<ul style="list-style-type: none"><li>• One bag (30 lbs) will treat 10,000 sq ft for white grubs, annual bluegrass weevil, chinch bugs, cranberry girdler, and mole crickets.</li><li>• One bag (30 lbs) will treat 15,000 sq ft for sod webworms, armyworms, and cutworms.</li></ul>
<b>HOW TO APPLY</b>	<ul style="list-style-type: none"><li>• Do not apply with hand-held or chest-mounted spreader.</li><li>• Apply granules using a broadcast or drop type spreader.</li></ul>
<b>QUESTIONS</b>	For questions or comments, call toll free 1 (800) 331-2867.

## SURFACE FEEDING INSECTS

Sod webworm, cranberry girdler, cutworm, and armyworm

<b>Use Rate</b>	<ul style="list-style-type: none"><li>• 2-3 pounds per 1,000 sq. ft. of turf.</li><li>• Refer to chart for spreader settings (Make sure your spreader is calibrated for this product before application).</li></ul>
<b>How to Apply</b>	<ul style="list-style-type: none"><li>• For properly managed turf remove excessive thatch, which encourages insects. Rake or de-thatch the area and remove the debris to expose insect hiding places.</li><li>• Water the turf and cut to proper height.</li><li>• Apply granules with a broadcast or drop type spreader.</li><li>• To release the active ingredient from the granule, the applicator must water-in after application or notify the property owner that he or she must water-in, on the same day as application, with sufficient water to thoroughly wet the remaining thatch. If sufficient rainfall to thoroughly wet the thatch occurs after application but before watering-in, additional watering-in is not required.</li></ul>
<b>When to Apply</b>	<ul style="list-style-type: none"><li>• Treat when the insects are present.</li><li>• To control multiple generations of sod webworm larvae, additional treatments at 30- to 40-day intervals during the summer months may be required. Do not make more than 3 applications per calendar year.</li></ul>

Apply Dylox 6.2 Granular Insecticide uniformly over the area being treated with normally used granular application equipment. Both drop-type and rotary-type spreaders may be used to apply Dylox 6.2 Granular Insecticide. Do not use spreaders that would apply the material in concentrated bands. Calibrate application equipment prior to use according to the manufacturer's directions. Check frequently to be sure equipment is working properly and distributing granules uniformly and accurately.

## Spreader Settings 2 pounds per 1,000 sq ft

SPREADER	SETTING	SPREADER	SETTING
Cyclone Pro	4	Scott's R7X	H
Cyclone-Roto	3	Spyker Pro	4
Lely Broadcast	2.5	Greenview (Model 105)	6.5
Lesco Rotary	11	Earthway (Model 2600)	8
Prize CB85, CB T85	4.5	Sears Broadcast	3.5
Scott's Drop	4	Sears Drop	6
<b>(30 pounds will treat 15000 sq ft at this rate)</b>			

## Spreader Settings 3 lb/1,000 sq ft

SPREADER	SETTING	SPREADER	SETTING
Cyclone Pro	4.75	Scott's R7X	J
Cyclone-Roto	3.5	Spyker Pro	4.7
Lely Broadcast	2.9	Greenview (Model 105)	7.5
Lesco Rotary	14	Earthway (Model 2600)	10
Prize CB85, CB T85	5	Sears Broadcast	4
Scott's Drop	4.5	Sears Drop	7
<b>(30 pounds will treat 10,000 sq ft at this rate)</b>			

## ROOT FEEDING INSECTS

annual bluegrass weevil (larvae) **white grub larvae:** larvae of Asiatic garden beetle, black turfgrass  
 Billbugs (larvae) **ataenius,** European chafer, green June beetle, Japanese beetle,  
 cranberry girdler **Aphodius spp.,** May or June beetles (*Phyllophaga* spp.), northern &  
 mole crickets **southern masked chafers (*Cyclocephala* spp.),** Oriental beetle, and  
 chinch bugs **sugarcane grubs (*Tomarus* spp.)**

### Use Rate

- 3 pounds per 1,000 sq. ft. of turf.
- Refer to chart for spreader settings (Make sure your spreader is calibrated for this product before application).

### How to Apply

- Ensure that there is no more than 1/2 inch of thatch present at time of application. Under dry conditions, prewater prior to application for control of white grub and weevil larvae.
- Water the turf and cut to proper height.
- Apply granules with a broadcast or drop type spreader.
- The applicator must water-in after application or notify the property owner that he or she must water-in, on the same day as application, with sufficient water to thoroughly wet the remaining thatch and move the product to the root zone. If sufficient rainfall to thoroughly wet the thatch occurs after application but before watering-in, additional watering-in is not required.

### When to Apply

- Apply when pests are present.
- Consult your Agricultural Extension Service for the best time to treat in your area.
- A second treatment may be needed for mature large sized grubs.



## STORAGE AND DISPOSAL

Do not contaminate water, food, or feed by storage or disposal.

<b>PESTICIDE STORAGE:</b>	<ul style="list-style-type: none"><li>• Store in its original container in a cool, dry, locked place out of reach of children.</li></ul>
<b>PESTICIDE DISPOSAL:</b>	<ul style="list-style-type: none"><li>• Wastes resulting from the use of this product may be disposed of on site or at an approved waste disposal facility.</li></ul>
<b>CONTAINER HANDLING:</b>	<ul style="list-style-type: none"><li>• Nonrefillable container. Do not reuse or refill this container. Completely empty bag into application equipment. Offer for recycling, if available or dispose of empty bag in a sanitary landfill.</li></ul>

### IMPORTANT: READ BEFORE USE

Read the entire Directions for Use, Conditions, Disclaimer of Warranties and Limitations of Liability before using this product. If terms are not acceptable, return the unopened product container at once. By using this product, user or buyer accepts the following Conditions, Disclaimer of Warranties and Limitations of Liability.

**CONDITIONS:** The directions for use of this product are believed to be adequate and must be followed carefully. However, because of manner of use and other factors beyond Bayer CropScience LP's control it is impossible for Bayer CropScience LP to eliminate all risks associated with the use of this product. As a result, crop injury or ineffectiveness is always possible. All such risks shall be assumed by the user or buyer.

**DISCLAIMER OF WARRANTIES:** TO THE EXTENT CONSISTENT WITH APPLICABLE LAW, BAYER CROPSCIENCE LP MAKES NO OTHER WARRANTIES, EXPRESS OR IMPLIED, OF MERCHANTABILITY OR OF FITNESS FOR A PARTICULAR PURPOSE OR OTHERWISE, THAT EXTEND BEYOND THE STATEMENTS MADE ON THIS LABEL. No agent of Bayer CropScience LP is authorized to make any warranties beyond those contained herein or to modify the warranties contained herein. TO THE EXTENT CONSISTENT WITH APPLICABLE LAW, Bayer CropScience LP disclaims any liability whatsoever for special, incidental or consequential damages, resulting from the use or handling of this product.

**LIMITATIONS OF LIABILITY:** TO THE EXTENT CONSISTENT WITH APPLICABLE LAW, THE EXCLUSIVE REMEDY OF THE USER OR BUYER FOR ANY AND ALL LOSSES, INJURIES OR DAMAGES RESULTING FROM THE USE OR HANDLING OF THIS PRODUCT, WHETHER IN CONTRACT, WARRANTY, TORT, NEGLIGENCE, STRICT LIABILITY OR OTHERWISE, SHALL NOT EXCEED THE PURCHASE PRICE PAID, OR AT BAYER CROPSCIENCE LP'S ELECTION, THE REPLACEMENT OF PRODUCT.

Dylox is a trademark owned by AMVAC Chemical Corporation and used under license.

Bayer (reg'd), the Bayer Cross (reg'd) are registered trademarks of Bayer.



**Bayer**

**Produced for:  
Bayer Environmental Science  
A Division of Bayer CropScience LP  
5000 CentreGreen Way, Suite 400  
Cary, NC 27513**



## DYLOX® 6.2 GRANULAR INSECTICIDE

Version 3 / USA  
102000012263

1/11  
Revision Date: 09/12/2013  
Print Date: 01/05/2017

### SECTION 1: IDENTIFICATION OF THE SUBSTANCE/MIXTURE AND OF THE COMPANY/UNDERTAKING

#### Product identifier

Trade name	DYLOX® 6.2 GRANULAR INSECTICIDE
Product code (UVP)	04399137
SDS Number	102000012263
EPA Registration No.	432-1308

#### Relevant identified uses of the substance or mixture and uses advised against

Use	Insecticide
Restrictions on use	See product label for restrictions.

#### Information on manufacturer

Bayer Environmental Science  
2 T.W. Alexander Drive  
Research Triangle PK, NC 27709  
United States

#### Emergency telephone no.

All Emergencies, 24hr/ 7 days 1-800-334-7577

#### Product Information

##### Telephone No.

SDS Information or Request [SDSINFO.BCS-NA@bayer.com](mailto:SDSINFO.BCS-NA@bayer.com)

### SECTION 2: HAZARDS IDENTIFICATION

#### Classification in accordance with regulation HCS 29CFR §1910.1200

Acute toxicity (Inhalation): Category 4

Eye irritation : Category 2B



**Signal word:** Warning

#### Hazard statements

Harmful if inhaled.

Causes eye irritation.

#### Precautionary statements

Avoid breathing dust.

Use only outdoors or in a well-ventilated area.

Wash face, hands and any exposed skin thoroughly after handling.

IF INHALED:

Remove victim to fresh air and keep at rest in a position comfortable for breathing.

Call a POISON CENTER or doctor/ physician if you feel unwell.



## DYLOX® 6.2 GRANULAR INSECTICIDE

Version 3 / USA  
102000012263

2/11  
Revision Date: 09/12/2013  
Print Date: 01/05/2017

IF IN EYES: Rinse cautiously with water for several minutes. Remove contact lenses, if present and easy to do. Continue rinsing.  
If eye irritation persists: Get medical advice/attention.

### Other hazards

This product contains an cholinesterase inhibitor.

---

## SECTION 3: COMPOSITION/INFORMATION ON INGREDIENTS

Hazardous Component Name	CAS-No.	Average % by Weight
Trichlorfon	52-68-6	6.20

---

## SECTION 4: FIRST AID MEASURES

### Description of first aid measures

#### General advice

When possible, have the product container or label with you when calling a poison control center or doctor or going for treatment.

Inhalation, dermal absorption or ingestion of this product may result in systemic intoxication due to inhibition of the enzyme cholinesterase. Symptoms of poisoning may only appear several hours later.

#### Inhalation

If person is not breathing, call 911 or an ambulance, then give artificial respiration, preferably mouth-to-mouth if possible. Call a physician or poison control center immediately. Move to fresh air. Keep patient warm and at rest.

#### Skin contact

Wash off immediately with plenty of water for at least 15 minutes. Take off contaminated clothing and shoes immediately. Call a physician or poison control center immediately.

#### Eye contact

Hold eye open and rinse slowly and gently with water for 15-20 minutes. Remove contact lenses, if present, after the first 5 minutes, then continue rinsing eye. Call a physician or poison control center immediately.

#### Ingestion

Never give anything by mouth to an unconscious person. DO NOT induce vomiting unless directed to do so by a physician or poison control center. Rinse out mouth and give water in small sips to drink. Call a physician or poison control center immediately.

### Most important symptoms and effects, both acute and delayed

#### Symptoms

This product causes reversible cholinesterase inhibition without long term effects., Repeated overexposure may cause more severe cholinesterase inhibition with more pronounced symptoms.

The symptoms of cholinesterase inhibition include:

Nausea, Salivation, Lachrymation, Blurred vision, Constriction of pupils



**DYLOX® 6.2 GRANULAR INSECTICIDE**

Version 3 / USA  
102000012263

3/11  
Revision Date: 09/12/2013  
Print Date: 01/05/2017

---

**Indication of any immediate medical attention and special treatment needed**

<b>Risks</b>	This product contains an anticholinesterase compound. Do not use if under medical advice not to work with such compounds.
<b>Treatment</b>	The following antidotes are generally accepted: atropin and oximes.

---

**SECTION 5: FIREFIGHTING MEASURES**

**Extinguishing media**

**Suitable** Use water spray, alcohol-resistant foam, dry chemical or carbon dioxide.

**Unsuitable** None known.

**Special hazards arising from the substance or mixture** Dangerous gases are evolved in the event of a fire., In the event of fire the following may be released:, Chloral

**Advice for firefighters**

**Special protective equipment for fire-fighters** Firefighters should wear NIOSH approved self-contained breathing apparatus and full protective clothing.

**Further information** Keep out of smoke. Fight fire from upwind position. Cool closed containers exposed to fire with water spray. Do not allow run-off from fire fighting to enter drains or water courses.

**Flash point** not applicable

**Autoignition temperature** no data available

**Lower explosion limit** not applicable

**Upper explosion limit** not applicable

**Explosivity** no data available

---



**DYLOX® 6.2 GRANULAR INSECTICIDE**

Version 3 / USA  
102000012263

4/11  
Revision Date: 09/12/2013  
Print Date: 01/05/2017

**SECTION 6: ACCIDENTAL RELEASE MEASURES**

**Personal precautions, protective equipment and emergency procedures**

**Precautions** Avoid contact with spilled product or contaminated surfaces. Isolate hazard area. Avoid dust formation.

**Methods and materials for containment and cleaning up**

**Methods for cleaning up** Sweep up or vacuum up spillage and collect in suitable container for disposal. Scrub contaminated area with detergent and bleach solution. Flush with water. Contaminated soil may have to be removed and disposed.

**Additional advice** Use personal protective equipment. Do not allow to enter soil, waterways or waste water canal.

**SECTION 7: HANDLING AND STORAGE**

**Precautions for safe handling**

**Advice on safe handling** Handle and open container in a manner as to prevent spillage. Use only in area provided with appropriate exhaust ventilation. Avoid contact with skin, eyes and clothing.

**Hygiene measures** Wash hands thoroughly with soap and water after handling and before eating, drinking, chewing gum, using tobacco, using the toilet or applying cosmetics. Remove soiled clothing immediately and clean thoroughly before using again.

**Conditions for safe storage, including any incompatibilities**

**Requirements for storage areas and containers** Store in a cool, dry place and in such a manner as to prevent cross contamination with other crop protection products, fertilizers, food, and feed. Store in original container and out of the reach of children, preferably in a locked storage area.

**SECTION 8: EXPOSURE CONTROLS/PERSONAL PROTECTION**

**Control parameters**

Components	CAS-No.	Control parameters	Update	Basis
Trichlorfon	52-68-6	0.28 mg/m3 (TWA)		OES BCS*
Trichlorfon (Inhalable fraction.)	52-68-6	1 mg/m3 (TWA)	02 2012	ACGIH
Trichlorfon	52-68-6	1 ug/m3 (AN ESL)	07 2011	TX ESL
Trichlorfon	52-68-6	10 ug/m3 (ST ESL)	07 2011	TX ESL

\*OES BCS: Internal Bayer CropScience "Occupational Exposure Standard"



**DYLOX® 6.2 GRANULAR INSECTICIDE**

Version 3 / USA  
10200012263

5/11  
Revision Date: 09/12/2013  
Print Date: 01/05/2017

**Exposure controls**

**Personal protective equipment**

In normal use and handling conditions please refer to the label and/or leaflet. In all other cases the following recommendations would apply.

<b>Hand protection</b>	Chemical resistant nitrile rubber gloves
<b>Eye protection</b>	Safety glasses with side-shields or Goggles
<b>Skin and body protection</b>	Long-sleeved shirt and long pants Shoes plus socks
<b>General protective measures</b>	Follow manufacturer's instructions for cleaning/maintaining PPE. If no such instructions for washables, use detergent and warm/tepid water. Keep and wash PPE separately from other laundry.

**SECTION 9. PHYSICAL AND CHEMICAL PROPERTIES**

<b>Appearance</b>	tan
<b>Physical State</b>	granular
<b>Odor</b>	sweet
<b>Odour Threshold</b>	no data available
<b>pH</b>	ca. 4.6 (1 %)
<b>Vapor Pressure</b>	no data available
<b>Vapor Density (Air = 1)</b>	no data available
<b>Bulk density</b>	30 - 35 lb/ft <sup>3</sup>
<b>Evaporation rate</b>	not applicable
<b>Boiling Point</b>	not applicable
<b>Melting / Freezing Point</b>	not applicable
<b>Water solubility</b>	no data available
<b>Minimum Ignition Energy</b>	no data available



**DYLOX® 6.2 GRANULAR INSECTICIDE**

Version 3 / USA  
102000012263

6/11  
Revision Date: 09/12/2013  
Print Date: 01/05/2017

---

<b>Decomposition temperature</b>	no data available
<b>Partition coefficient: n-octanol/water</b>	no data available
<b>Viscosity</b>	not applicable
<b>Flash point</b>	not applicable
<b>Autoignition temperature</b>	no data available
<b>Lower explosion limit</b>	not applicable
<b>Upper explosion limit</b>	not applicable
<b>Explosivity</b>	no data available

---

**SECTION 10: STABILITY AND REACTIVITY**

**Reactivity**

<b>Thermal decomposition</b>	no data available
<b>Chemical stability</b>	Stable under normal conditions.
<b>Possibility of hazardous reactions</b>	No hazardous reactions when stored and handled according to prescribed instructions.
<b>Conditions to avoid</b>	Exposure to moisture.
<b>Incompatible materials</b>	Strong oxidizing agents, Bases
<b>Hazardous decomposition products</b>	Chloral Dimethyl hydrogen phosphite Carbon monoxide Oxides of phosphorus

---

**SECTION 11: TOXICOLOGICAL INFORMATION**

<b>Exposure routes</b>	Eye contact, Skin Absorption, Skin contact, Inhalation
<b>Immediate Effects</b>	
<b>Eye</b>	Moderate eye irritation.



**DYLOX® 6.2 GRANULAR INSECTICIDE**

Version 3 / USA  
102000012263

7/11  
Revision Date: 09/12/2013  
Print Date: 01/05/2017

**Ingestion** Harmful if swallowed.

**Inhalation** Harmful if inhaled.

**Information on toxicological effects**

**Acute oral toxicity** LD50 (male rat) > 5,100 mg/kg

LD50 (female rat) > 5,000 mg/kg

**Acute inhalation toxicity** LC50 (male/female combined rat) > 2 mg/l  
Exposure time: 4 h  
Determined in the form of dust.

LC50 (male/female combined rat) > 8 mg/l  
Exposure time: 1 h  
Determined in the form of dust.  
Extrapolated from the 4 hr LC50.

**Acute dermal toxicity** LD50 (male/female combined rat) > 5,000 mg/kg

**Skin irritation** No skin irritation (rabbit)

**Eye irritation** Mild eye irritation. (rabbit)

**Sensitisation** Non-sensitizing. (guinea pig)

**Assessment repeated dose toxicity**

Trichlorfon did not cause specific target organ toxicity in experimental animal studies.

**Assessment Mutagenicity**

Trichlorfon was not mutagenic or genotoxic based on the overall weight of evidence in a battery of in vitro and in vivo tests.

**Assessment Carcinogenicity**

Trichlorfon was not carcinogenic in lifetime feeding studies in rats and mice.

**ACGIH**

None.

**NTP**

None.

**IARC**

None.

**OSHA**

None.

**Assessment toxicity to reproduction**

Trichlorfon is not considered a reproductive toxicant at non-maternally toxic dose levels.





**DYLOX® 6.2 GRANULAR INSECTICIDE**

Version 3 / USA  
102000012263

8/11  
Revision Date: 09/12/2013  
Print Date: 01/05/2017

**Assessment developmental toxicity**

Trichlorfon did not cause developmental toxicity in rats and rabbits.

**Further information**

Only acute toxicity studies have been performed on the formulated product.

---

**SECTION 12: ECOLOGICAL INFORMATION**

<b>Toxicity to fish</b>	LC50 (Leuciscus idus (Golden orfe)) 0.52 mg/l Exposure time: 96 h The value mentioned relates to the active ingredient trichlorfon.  LC50 (Rainbow trout (Oncorhynchus mykiss)) 0.7 mg/l Exposure time: 96 h The value mentioned relates to the active ingredient trichlorfon.
<b>Toxicity to aquatic invertebrates</b>	LC50 (Water flea (Daphnia magna)) 0.00096 mg/l Exposure time: 48 h The value mentioned relates to the active ingredient trichlorfon.
<b>Toxicity to aquatic plants</b>	EC50 (Desmodemus subspicatus) 347 mg/l Exposure time: 72 h The value mentioned relates to the active ingredient trichlorfon.
<b>Environmental precautions</b>	Do not apply directly to water, to areas where surface water is present or to intertidal areas below the mean high water mark. Do not contaminate surface or ground water by cleaning equipment or disposal of wastes, including equipment wash water. Do not allow to get into surface water, drains and ground water. Drift and runoff from treated areas may be hazardous to aquatic organisms in adjacent sites. Apply this product as specified on the label.

---

**SECTION 13: DISPOSAL CONSIDERATIONS**

**Waste treatment methods**

<b>Product</b>	Pesticide, spray mixture or rinse water that cannot be used according to label instructions may be disposed of on site or at an approved waste disposal facility.
<b>Contaminated packaging</b>	Empty remaining contents. Dispose of empty container in a sanitary landfill or by incineration, or, if allowed by State/Provincial and local authorities, by burning. If burned, stay out of smoke.



**DYLOX® 6.2 GRANULAR INSECTICIDE**

Version 3 / USA  
102000012263

9/11  
Revision Date: 09/12/2013  
Print Date: 01/05/2017

**RCRA Information**

Characterization and proper disposal of this material as a special or hazardous waste is dependent upon Federal, State and local laws and are the user's responsibility. RCRA classification may apply.

---

**SECTION 14: TRANSPORT INFORMATION**

**49CFR**

UN number	<b>3077</b>
Class	9
Packaging group	III
Proper shipping name	ENVIRONMENTALLY HAZARDOUS SUBSTANCES, SOLID, N.O.S. (TRICHLORFON)
RQ	Reportable Quantity is reached with 1,612 lb of product.

**IMDG**

UN number	<b>3077</b>
Class	9
Packaging group	III
Marine pollutant	YES
Proper shipping name	ENVIRONMENTALLY HAZARDOUS SUBSTANCE, SOLID, N.O.S. (TRICHLORFON MIXTURE)

**IATA**

UN number	<b>3077</b>
Class	9
Packaging group	III
Environm. Hazardous Mark	YES
Proper shipping name	ENVIRONMENTALLY HAZARDOUS SUBSTANCE, SOLID, N.O.S. (TRICHLORFON MIXTURE )

This transportation information is not intended to convey all specific regulatory information relating to this product. It does not address regulatory variations due to package size or special transportation requirements.

Freight Classification: INSECTICIDES OR FUNGICIDES, N.O.I., OTHER THAN POISON

---

**SECTION 15: REGULATORY INFORMATION**

EPA Registration No.	432-1308
US Federal Regulations	
TSCA list	
None.	



**DYLOX® 6.2 GRANULAR INSECTICIDE**

Version 3 / USA  
102000012263

10/11  
Revision Date: 09/12/2013  
Print Date: 01/05/2017

**US. Toxic Substances Control Act (TSCA) Section 12(b) Export Notification (40 CFR 707, Subpt D)**

None.

**SARA Title III - Section 302 - Notification and Information**

None.

**SARA Title III - Section 313 - Toxic Chemical Release Reporting**

Trichlorfon 52-68-6 1.0%

**US States Regulatory Reporting**

**CA Prop65**

This product does not contain any substances known to the State of California to cause cancer.

This product does not contain any substances known to the State of California to cause reproductive harm.

**US State Right-To-Know Ingredients**

Trichlorfon 52-68-6 CA, CT, NJ

**Canadian Regulations**

**Canadian Domestic Substance List**

Trichlorfon 52-68-6

**Environmental**

**CERCLA**

Trichlorfon 52-68-6 100 lbs

**Clean Water Section 307 Priority Pollutants**

None.

**Safe Drinking Water Act Maximum Contaminant Levels**

None.

**International Regulations**

**European Inventory of Existing Commercial Substances (EINECS)**

Trichlorfon 52-68-6

**EPA/FIFRA Information:**

This chemical is a pesticide product registered by the Environmental Protection Agency and is subject to certain labeling requirements under federal pesticide law. These requirements differ from the classification criteria and hazard information required for safety data sheets, and for workplace labels of non-pesticide chemicals. Following is the hazard information required on the pesticide label:

**Signal word:** Caution!

**Hazard statements:** Causes eye irritation.  
Cholinesterase inhibitor  
Avoid contact with skin, eyes and clothing.  
Avoid breathing dust or spray mist.  
Prolonged or frequently repeated skin contact may cause allergic reactions in some individuals.

**SECTION 16: OTHER INFORMATION**

**Bayer Environmental Science**  
SAFETY DATA SHEET



**DYLOX® 6.2 GRANULAR INSECTICIDE**

Version 3 / USA  
102000012263

11/11  
Revision Date: 09/12/2013  
Print Date: 01/05/2017

---

NFPA 704 (National Fire Protection Association):

Health - 2      Flammability - 1      Instability - 1      Others - none

HMIS (Hazardous Materials Identification System, based on the Third Edition Ratings Guide)

Health - 1      Flammability - 1      Physical Hazard - 1      PPE -

0 = minimal hazard, 1 = slight hazard, 2 = moderate hazard, 3 = severe hazard, 4 = extreme hazard

Reason for Revision: The following sections have been revised: Section 5: Fire Fighting Measures.  
Section 9: Physical and Chemical Properties.

Revision Date: 09/12/2013

This information is provided in good faith but without express or implied warranty. The customer assumes all responsibility for safety and use not in accordance with label instructions. The product names are registered trademarks of Bayer.